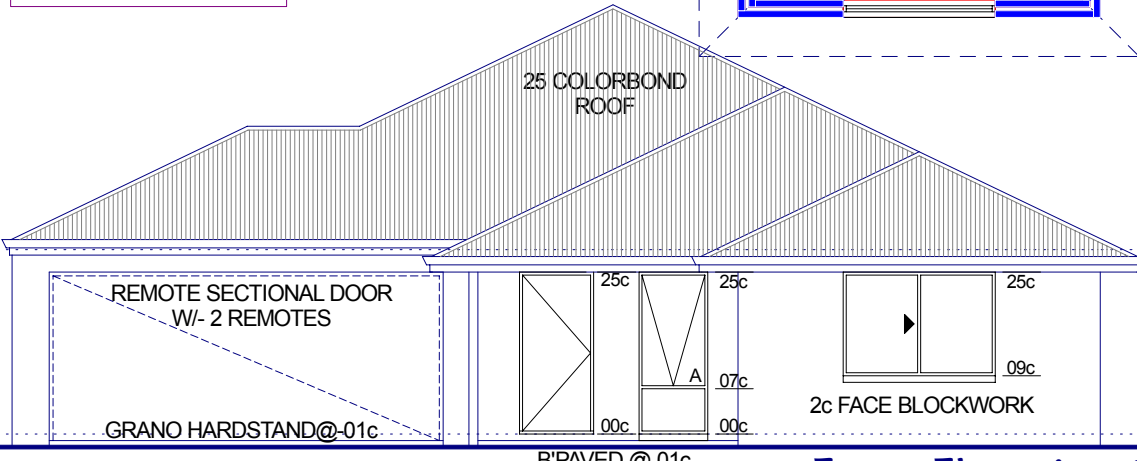


Area:

Living	180.26m <sup>2</sup> (74.36m PERIM)
Alfresco/Verandah	34.48m <sup>2</sup>
Garage	37.34m <sup>2</sup>
Porch	3.56m <sup>2</sup>
<b>Total</b>	<b>255.64m<sup>2</sup></b>
Roof area	275.84m <sup>2</sup>



**GRH Designs**  
 E-mail: ghdsgn@remartshat.net.au  
 6 Ford Street, Woodbridge, 8006  
 Ph: 0419 930 712  
 Creating Innovative & Practical Designs that are  
 Inspired by your Dreams and Vision.

**Midcoast Homes Builders**  
 We don't try to provide quality - we *INHERIT* it!  
 SERVICING JURIE BAY, GREENHEAD & CERVANTES  
 Phone 08 9652 2707 - Mobile 0418 926 771  
 Fax 08 9652 2708 - Email midcoast@remartshat.net.au  
 5 Zircon Street, Jurien Bay - PO Box 071, Jurien Bay, WA 6516

B'PAVED @01c

Front Elevation 1:100

# The Albatross