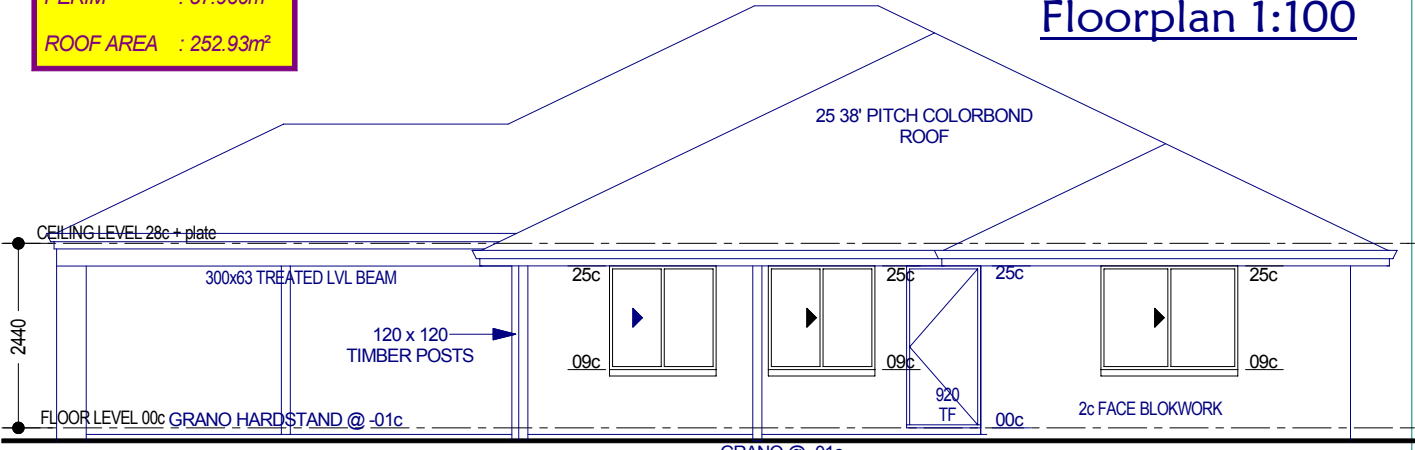


Floorplan 1:100

AREAS	
HOUSE	: 159.99m ²
GARAGE	: 36.12m ²
ALFRESCO	: 19.79m ²
VERANDAH	: 7.34m ²
TOTAL	: 223.24m²
PERIM	: 57.960m
ROOF AREA	: 252.93m²



Front Elevation 1:100

GRH Designs
 E-mail: ghdsgns@amatchat.net.au
 6 Ford Street, Woodbridge, 6056
 Ph: 0419 830 712
 Creating Innovative & Practical designs that are inspired by your Dreams and Vision.

Midcoast Homes Builders
 We don't try to provide quality - we INSIST upon it!
 SERVICING JURIEAN BAY, GREENHEAD & CERVANTES
 Phone 08 9632 2707 - Mobile 0418 926 771
 Fax 08 9632 2708 - Email midcoast@kissnet.net.au
 5 Zircon Street, Juriean Bay - PO Box 672, Juriean Bay, WA 6516

The Pinnacle